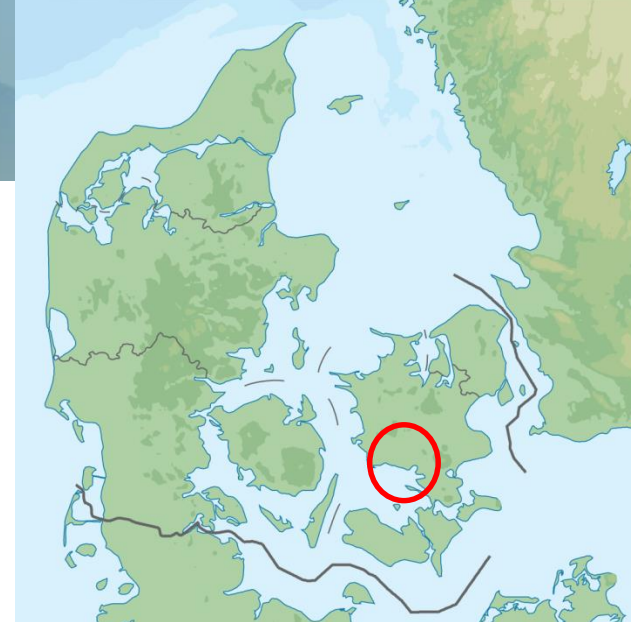




Business Opportunities in Næstved



MUNICIPALITY OF NÆSTVED



Area

- 681 km² - largest municipality on the island of Zealand



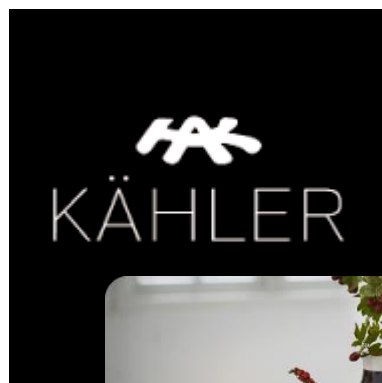
Inhabitants

- 82.605 inhabitants (1/10-16)
- Approx. 43.000 in the city of Næstved
- Second largest in Region Zealand by inhabitants

Business Structure in Næstved – in short

- Jobcount of more than 30.000 fulltime employees
- Approx. 3.800 local businesses
- Construction, trade and industrial production are major sectors
- Many start-ups with good survival rates
- Population growth and a rising housing market

Companies in Næstved – examples



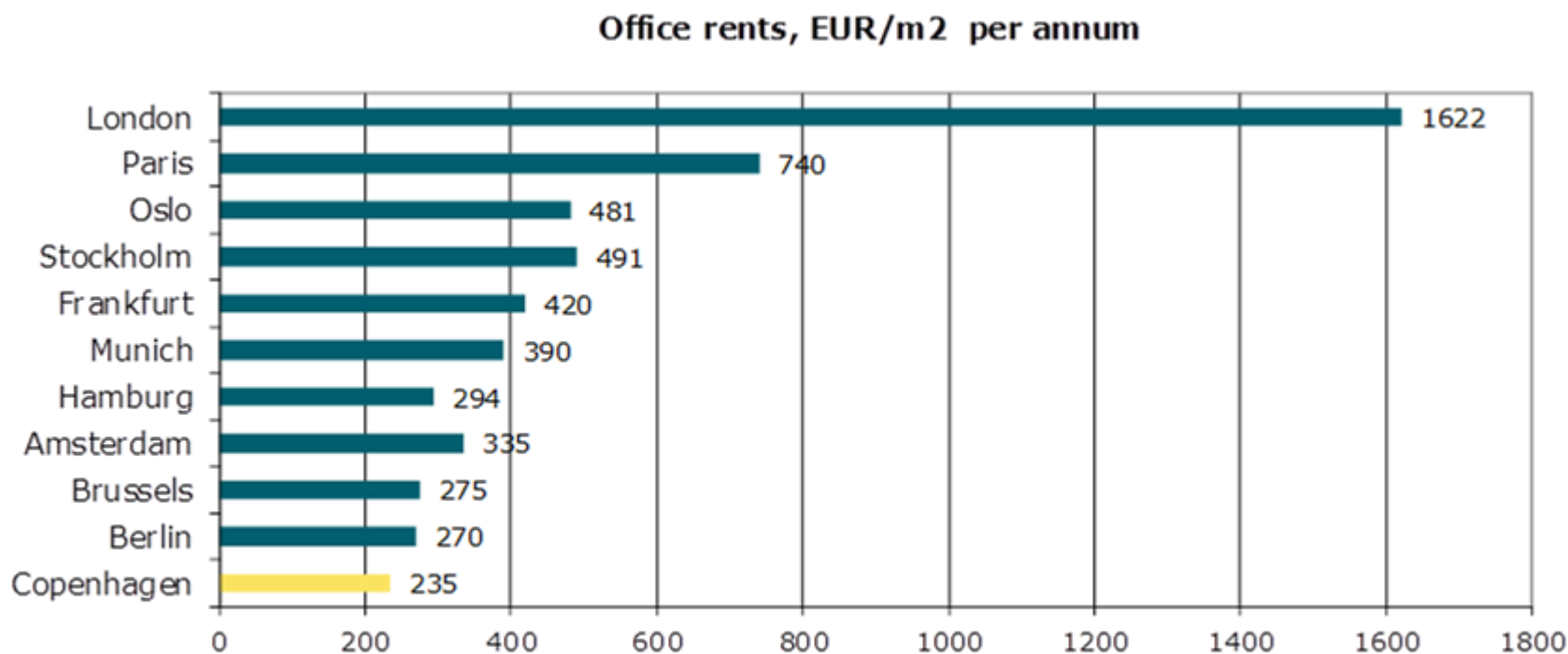
WHY DO BUSINESS IN DENMARK?

- Accessibility and location
 - next day delivery reach of 100 million of the wealthiest consumers in the world
- The most flexible jobmarket in the world
 - Flexicurity – high level flexibility in hiring and firing
- Denmark is the easiest places in the world to do business according to the World Bank.
 - Set up a business in one day and have residence and work permits issued in 5 weeks.
- Highly qualified and motivated talent pool
 - 96 percent of young people complete a secondary education program and 47 percent a tertiary one

WHY DO BUSINESS IN DENMARK?

- High quality of life
 - We are the happiest people in the world 😊
 - High productivity and good work/life balance
- Corruption and bribery practically unknown
 - Denmark has earned top rankings in the international transparency index for years.
- Cost efficient
 - Lowest office rental and corporate taxes (22%) in Scandinavia and below EU average
 - Practically no social contribution costs for employees
 - Competitive salary levels, especially for management

LOWEST OFFICE RENTAL



Source: Jones Lang LaSalle, 2014

LOW SOCIAL SECURITY COSTS

Country	Social security paid by
Denmark	0,63%
Switzerland	5,87%
USA	8,23%
United Kingdom	8,56%
Norway	13,56%
Netherlands	16,72%
Germany	18,36%
Poland	19,94%
Finland	23,04%
Austria	30,01%
Belgium	26,51%
Sweden	29,64%
France	51,91%

Source: IMD World Competitiveness Year Book, 2015, Table 2.2.11

Description: Compulsory contribution as a percentage of an income equal to GDP per capita

Employee costs for a specialist 2Q 2015 in Swedish kr.

Employee Costs	Sweden		Denmark	
	Specific	SEK	SEK	
Salary		38.555,00	48.132,63	
Pension		2.386,50	4.813,26	
Vacation Pay		5.012,15	6.497,91	
Social Contribution - Mandatory		11.682,22	310,50	
Salary tax		2.891,63		
Childcare benefit fund			76,67	
Employer workforce training fund			60,53	
Insurance – Group life			238,05	
Insurance - General against loss & damage		3,86	63,25	
Insurance – Health			206,82	
Other Costs		458,80	-	
Total Monthly cost		60.990,15	60.399,61	
Pension, Insurance and Social costs as a % of salary		45,19	11,99	
Inclusive Vacation Pay		58,19	25,49	

Employee costs Middle Manager 2Q 2015 in Swedish kr.

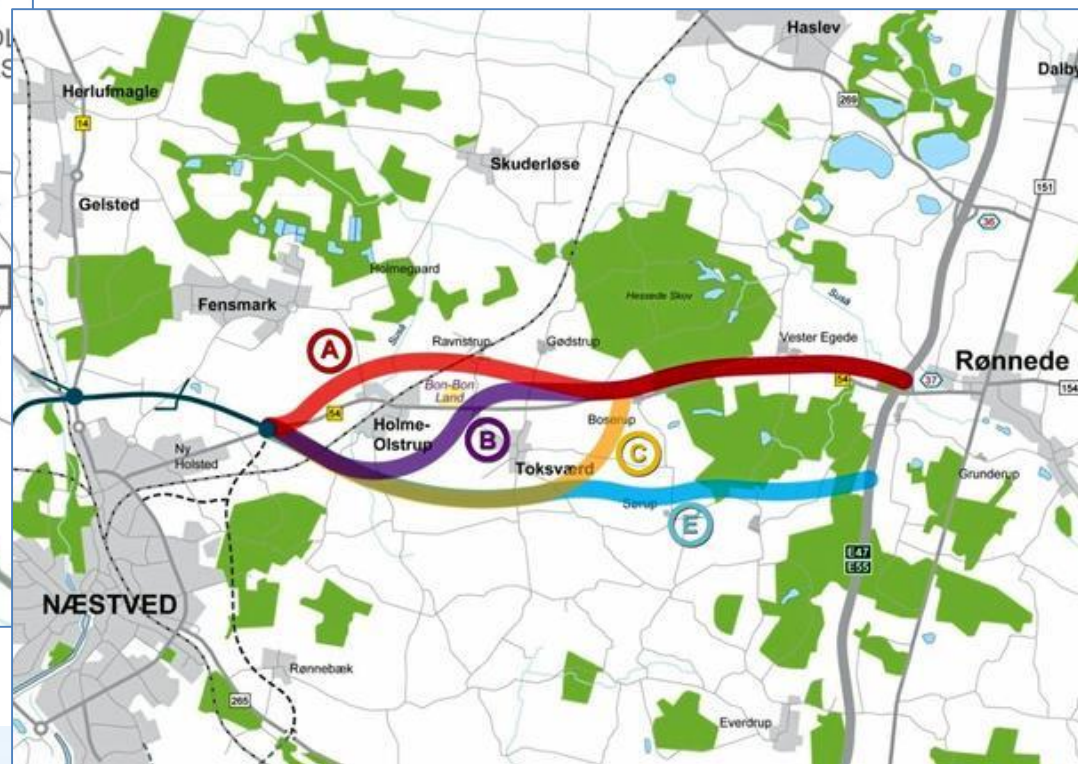
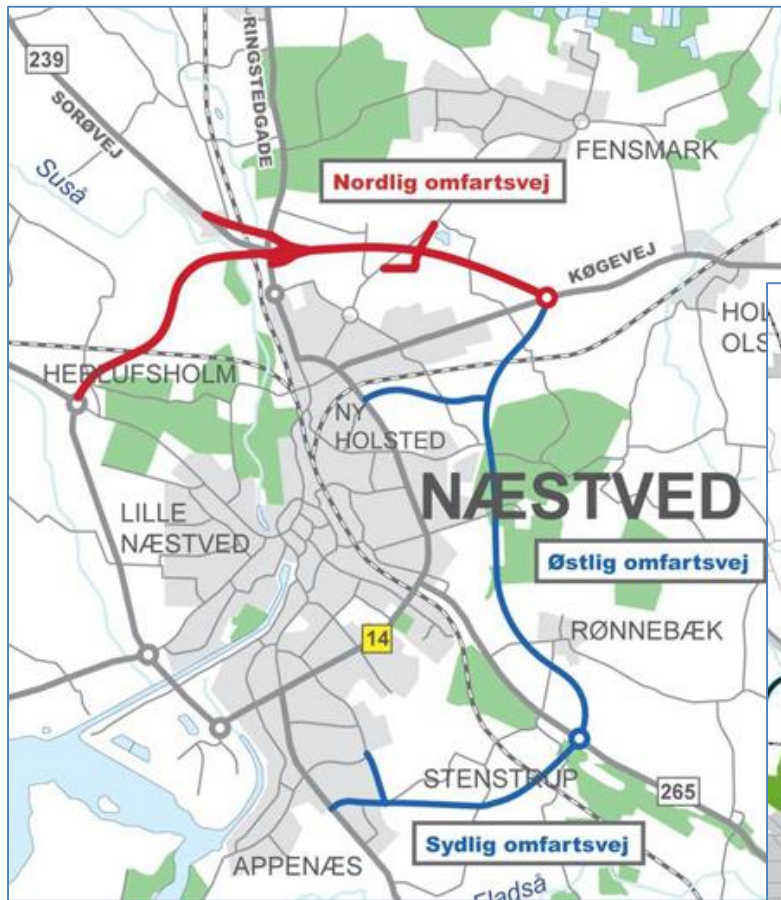
Specific Employee Costs	Sweden Sek	Denmark Sek
Salary	60.000,00	68.440,00
Bonus	7.500,00	8.555,00
Company paid pension	12.015,00	6.844,00
Vacation pay	8.775,00	10.009,35
Social contribution – mandatory	21.060,00	310,50
Salary tax	5.062,50	
Childcare benefit fund		76,67
Employer workforce training fund		60,53
Group life insurance		238,05
Insurance – General against loss & damage	-	63,25
Insurance – Health		206,82
Other costs	714,00	-
Total monthly cost	115.126,50	94.804,16
Pension, Insurance and Social cost as a % of salary	77,25	23,90
Incl Vacation Pay	91,88	38,52

WHY DO BUSINESS IN NÆSTVED?

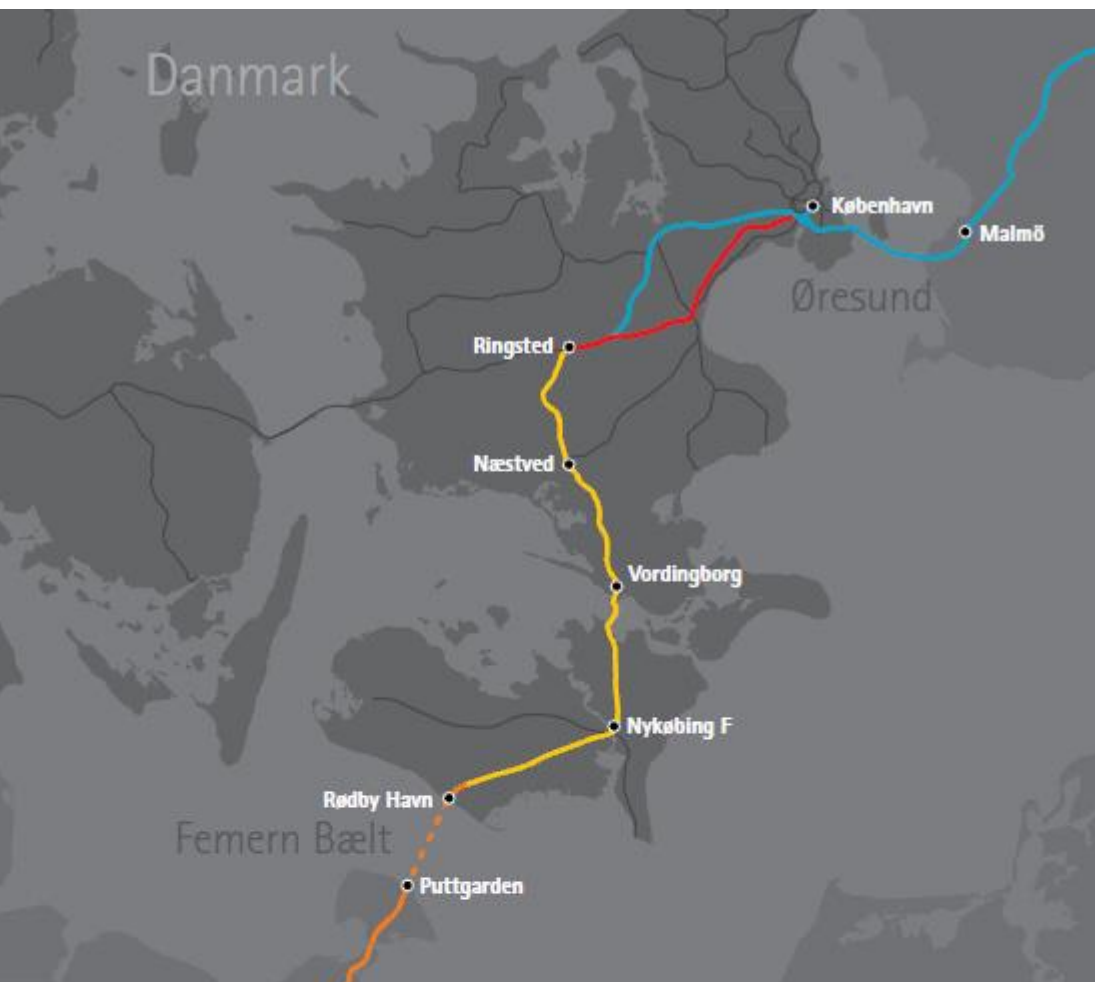
- Even lower rental and salary costs
 - Office rental costs less than half of Central Copenhagen
 - Salary level 10-15% lower
- Strong Business Environment
 - Large and growing City
 - In City: Business Academy (AP Level) and University College (AP-level), Tech and Business Colleges
 - New Campus under construction
- Good location
 - 1+ hour to Copenhagen Airport – 4 hours to Hamburg

New Infrastructure

- Ring North: 30/10 2016
- Ring South: Nov. 2017
- New Highway in?



Railway



- 2021: Næstved-Copenhagen:
 - 34 Minutes
 - Today: 55 Minutes
- 2028: Connection to Germany
 - Hamburg in less than 3 hours

NÆSTVED ERHVERV / "BUSINESS NÆSTVED"

Local Business Development Agency

Co-owned by the Municipality of Næstved and the local
Business Association

Budget: 4.3 mio dkr./y

7 employees



Næstved Erhverv

NÆSTVED ERHVERV

WHAT WE DO:



COUNSELING
ON BUSINESS
DEVELOPMENT



COUNSELING
AND COURSES
FOR START-UPS



ONE POINT OF
ENTRY FOR
BUSINESSES



BUSINESS
DEVELOPMENT
PROJECTS

Information

Rasmus Holst-Sorensen
Director

rhs@naestvederhverv.dk
www.naestvederhverv.dk



Næstved Erhverv